

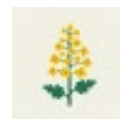
# The seed with speed!



SEEDING  
THE FUTURE  
SINCE 1856



## CAMPUS



Oilseed Rape  
Variety Type: Conventional

- Extremely vigorous growth habit
- Reliably high gross output with good lodging resistance and stem stiffness
- Gold standard tolerance to verticillium stem stripe

350,000 hectares of growers can't be wrong!  
Campus is one of the most widely sown oilseed rape varieties in the UK. Its popularity owes much to its exceptional autumn and strong spring vigour, which have delivered consistent on-farm performance.

Campus has good disease scores with a 6 for light leaf spot and stem canker, so is suitable for all regions, giving a good level of resistance to both major diseases.

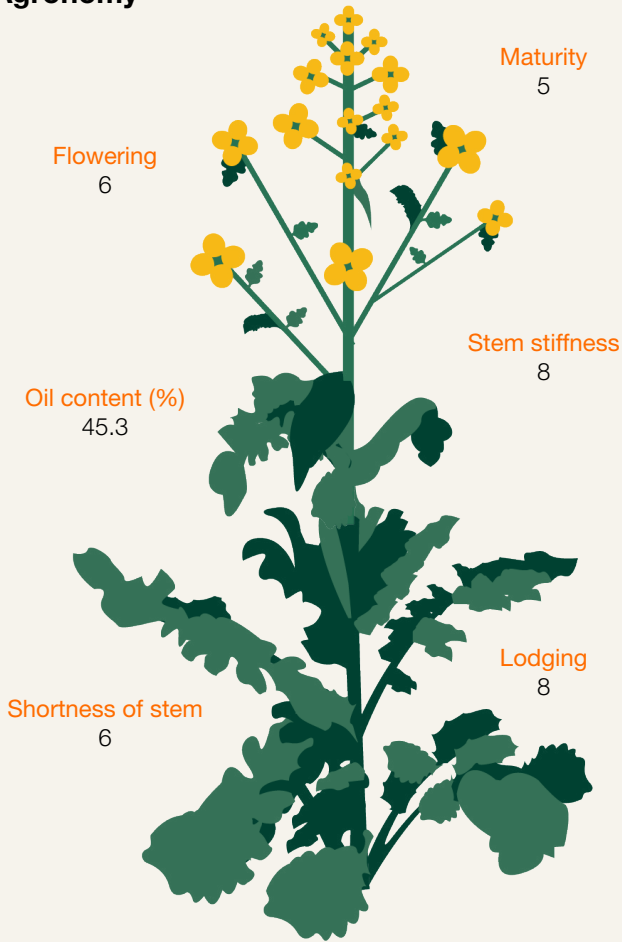
Additionally, it performs well in trials where verticillium stem stripe has been found.

It's faster than the flea beetle and always delivers more than it says on the tin!

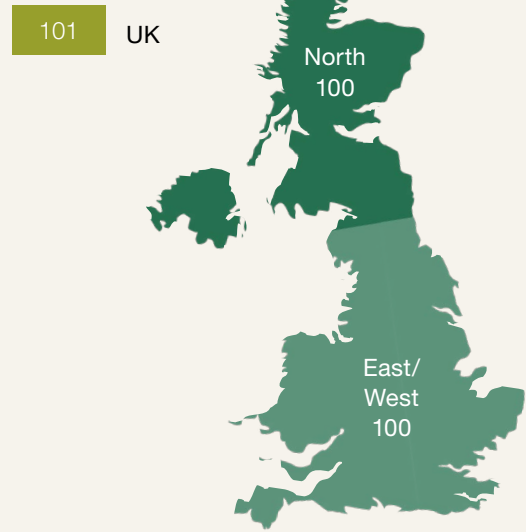


# CAMPUS in a nutshell

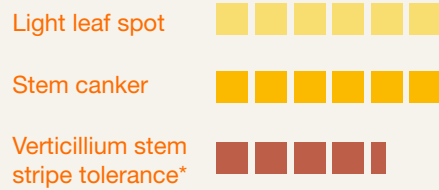
## Agronomy



## Yield (% controls)

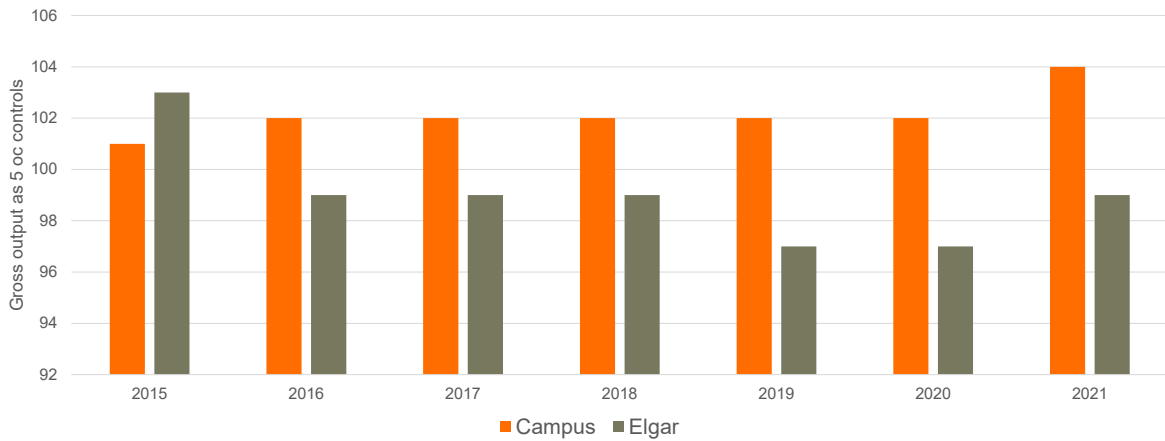


## Disease Resistance



Data sources: AHDB Recommended List, disease resistance score 0-9  
 \* KWS Internal scoring (out of 5) for verticillium stem stripe tolerance  
 Data source AHDB Recommended List Trials Oilseed Rape Harvest 2021

# Why you should grow CAMPUS



### Olivia's View:

*"A long established variety that has found favour on farm for many years – no longer listed but still competing well with newer introductions. Well-regarded for its consistency in performance and general all round package."*

[www.kws-uk.com](http://www.kws-uk.com)