

The **Sustainable Performer** in the field, malthouse, brewery and distillery!



SEEDING  
THE FUTURE  
SINCE 1856



# KWS CURTIS

2 Row Spring Malting Barley  
(KWS 13-5141 x Embrace)



- Easy to grow – very stiff with excellent standing and earliness
- Good specific weight
- More sustainable than current leading spring malting varieties

KWS Curtis is an exciting new addition to the Recommended list of spring malting barley's for harvest 2023. It combines good potential for both the brewing and distilling sectors in a true farmer-friendly variety that can help growers meet their increasingly sustainable demands.

First and foremost, it has good potential to be a dual purpose variety for the malting industry. Thanks to its good spirit yield, hot water extract and top grain credentials, it is currently under test by the MBC with potential for both the brewing and distilling markets.

On the farm, KWS Curtis has good yields in the North (103%) and East (105%) which, coupled with its earliness and super stiff straw, will make it a first-choice variety for many growers.

KWS Curtis is also ready to serve our future market requirements; its combination of high yields, good alcohol yields and strong straw makes it a step ahead of current commercialised varieties in terms of CO2 emissions. All of this ensures a more sustainable product for the entire supply chain.



RECOMMENDED

[www.kws-uk.com](http://www.kws-uk.com)

All data taken from **AHDB Recommended List, Spring Barley 2023/24** unless otherwise stated

# What makes KWS CURTIS the spring malting barley variety for you?

KWS Curtis produces more litres of alcohol per hectare than current brewing and distilling market leaders.

Distilling	Yield (t/ha, RL trial average 8.08t/ha)	Spirit Yield (PSY L/t MBC)	Spirit Yield (L per hectare)	CO2 Production (PSY /kg CO2)
<b>KWS Curtis</b>	<b>8.40</b>	<b>439</b>	<b>3687.6</b>	<b>5.07</b>
Laureate	8.24	437	3600.9	4.95

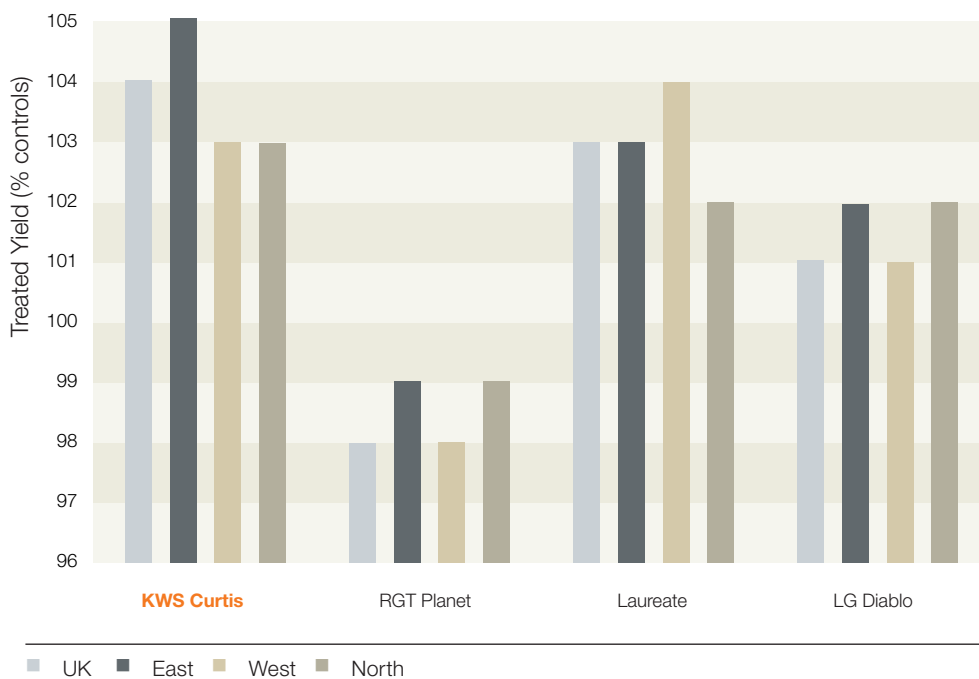
To produce 1000L alcohol in this situation, KWS Curtis would produce **120KG LESS CO2** than Laureate

Brewing	Yield (t/ha, RL trial average 8.08t/ha)	Spirit Yield (PSY L/t MBC)	HWE (L per hectare)	CO2 Production HWE/kg CO2)
<b>KWS Curtis</b>	<b>7.92</b>	<b>315</b>	<b>2497068</b>	<b>3430</b>
RGT Planet	7.19	314	2258665	3103

**10% less CO2** produced by KWS Curtis to produce same HWE as RGT Planet

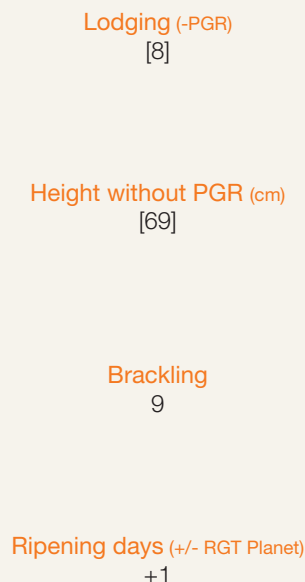
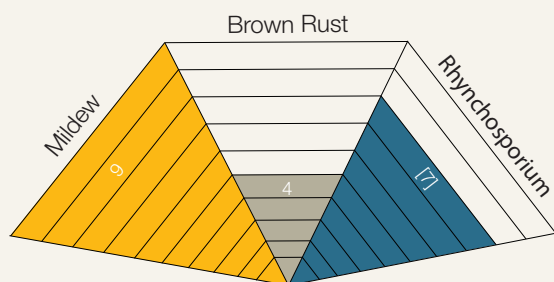
Assume 130kg N/ha, 5.6KG CO2/KGN applied (Yara)  
728KG CO2/ha just on nitrogen alone

## KWS CURTIS yield performance



Yield	% treated controls
UK	104
East	105
West	[103]
North	103
Untreated	93

# Disease resistance and agronomy of KWS CURTIS



\*Data source: KWS UK dataset

## KWS CURTIS end-use and grain quality

KWS Curtis is currently under evaluation by the MBC to assess its potential for malting, brewing and distilling. It is advised that growers check their supply agreements to tailor their nitrogen specifically to precisely meet their end-user requirements.

All KWS varieties are bred to deliver the best combination of high specific weight with low screenings to easily fulfil the requirements of the domestic and export malting barley markets. KWS Curtis is no exception, with a high specific weight, low screenings and low skinning.

KWS Curtis	
<b>Grain Quality</b>	
Specific weight (kg/hl)	67.5
Screenings (% through 2.25mm)	1.9



# A new dawn for spring malting barley at KWS

KWS sows the future. For over 160 years, the name KWS has been synonymous with tradition and successful plant breeding, as well as global openness and international growth.

Our mission remains simple: to provide high-performing varieties tailored to the needs of agriculture for generations through the delivery of our company principles.

## Our company principles

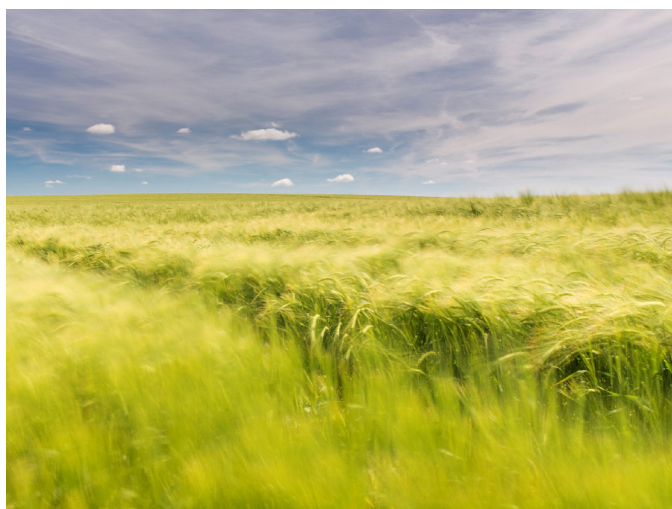
- We increase and improve the genetic potential through outstanding research and breeding programmes.
- We deliver the very best seeds to our farmers.
- They trust us as a powerful partner along the entire value-added chain.
- We create entrepreneurial freedom and help talents to unfold their full potential.

Here at KWS, we understand the importance of malting barley as raw ingredients to the beverage and food industries and as a cornerstone of the farm rotation. Whilst we have a presence in this market sector, we're prepared for growth and believe that we have the expertise to deliver class-leading varieties for growers to supply to the brewing and distilling supply chain.

Our pan-European spring barley breeding program has been refocused to deliver new innovative lines suited to the malting, brewing and distilling industries across the key markets of the UK, France, Germany and Scandinavia.

We are increasing our genetic pool of spring malting types and aim to work with everyone across the supply chain to realise that potential. Not only that, we have a wealth of other species suited to malting, be it winter types, distilling wheats and hybrid ryes to suit your farm and end-user customer.

To learn more about our dedicated breeding programmes for the malting and brewing sectors, contact us at our breeding station in Cambridgeshire.



## KWS Contacts

### Will Compson

UK Country Manager

**T** 077966 995828

**E** will.compson@kws.com

### Henry Barber

Spring Barley Breeder

**T** 07717 828502

**E** henry.barber@kws.com

### Kirsty Richards

Cereals Product Manager

**T** 07748 960726

**E** kirsty.richards@kws.com