

Bred to be bold, lively and full of spirit



KWS SASSY

2 Row Spring Malting Barley
(Concerto x Publican)

- Very high specific weight (68.9 kg/hl)
- Very low screenings
- Non-GN suited to the distilling market

KWS Sassy is a non-GN producing spring malting barley that has been tried and tested by the UK distilling industry. It is fully approved by the MBC for malting and distilling and continues to deliver the highest specific weights (68.9 kg/hl) and the lowest screenings of any currently listed spring distilling barley – all key attributes for the maltster and grower alike.

What's more, over the seasons it has consistently delivered for growers, especially those in the north, where it delivers some of its better yields (96% controls). A taller type, KWS Sassy has a decent straw and strong agronomic package, including good resistance to *Rhynchosporium* (6) and mildew (8).



RECOMMENDED



www.kws-uk.com



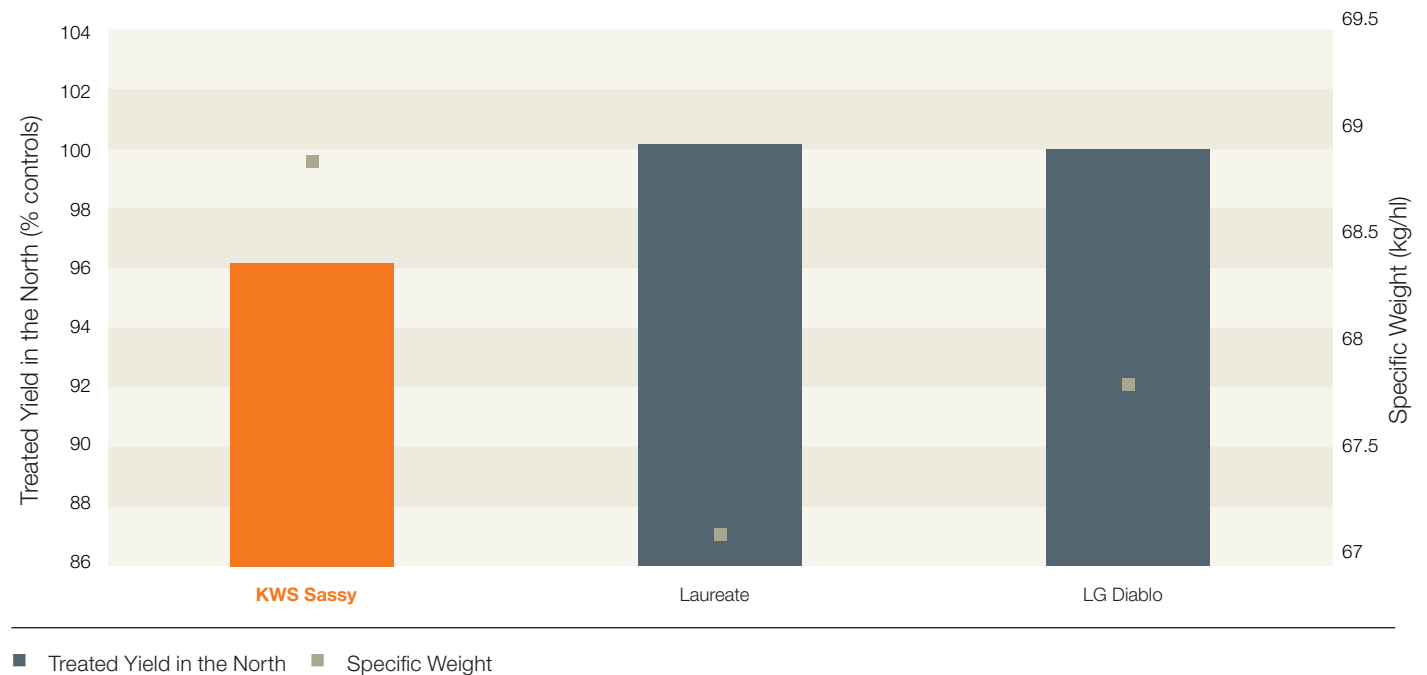
At a +1 maturity, it is a similar maturing variety to many other commercialised distilling types.



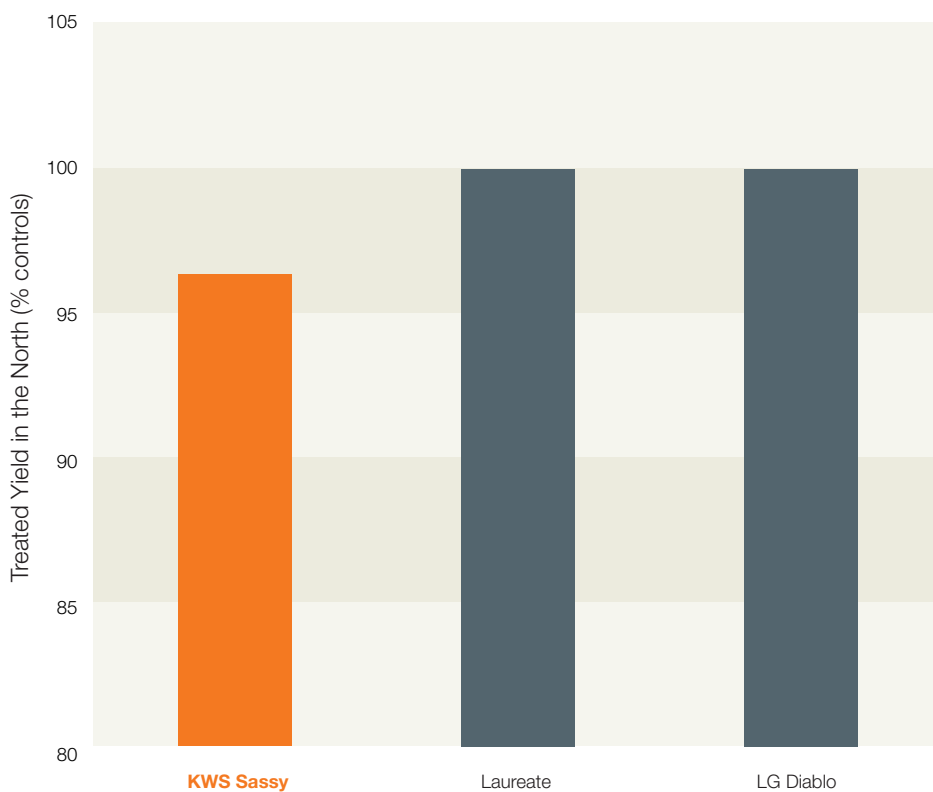
All data taken from **AHDB Recommended List, Spring Barley 2024/25** unless otherwise stated

What makes KWS SASSY the spring malting barley variety for you?

KWS Sassy has one of the highest specific weight on the 2024 Recommended List with low screenings.



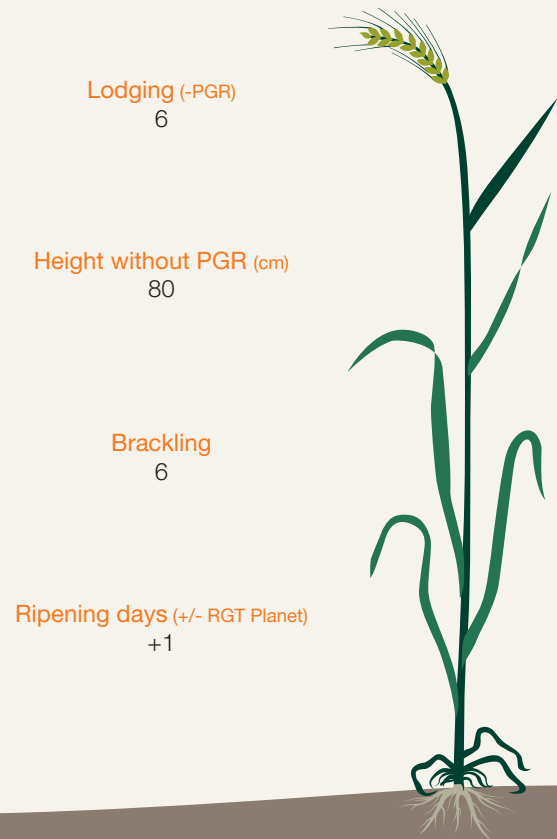
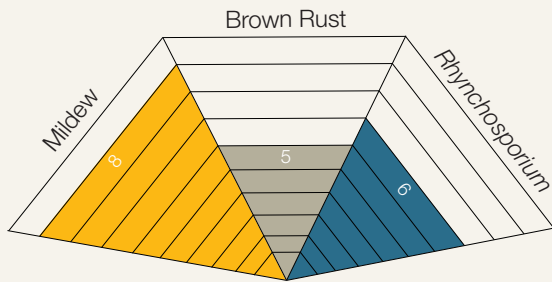
KWS SASSY yield performance



Yield	% treated controls
UK	95
East	93
West	96
North	96
Untreated	86

■ Treated Yield in the North

Disease resistance and agronomy of KWS SASSY



*Data source: KWS UK dataset

KWS SASSY end-use and grain quality

Commercial experience has shown that KWS Sassy produces a good spirit yield and is easy to process in the malt house and distillery; it is fully approved for distilling by the MBC. Contracts are available throughout Scotland; nitrogen should be tailored to reach a %N of below 1.65% however, it is advised to always check with your end-user for their precise requirements.

All KWS varieties are bred to deliver the best combination of high specific weight with low screenings to easily fulfil the requirements of the domestic and export malting barley markets. KWS Sassy is no exception, with one of the highest specific weight and lowest screenings on the 2024/25 Recommended List.

KWS Sassy	
Grain Quality	
Specific weight (kg/hl)	68.9
Screenings (% through 2.25mm)	1.0
Screenings (% through 2.5mm)	2.4



A new dawn for spring malting barley at KWS

KWS sows the future. For over 160 years, the name KWS has been synonymous with tradition and successful plant breeding, as well as global openness and international growth.

Our mission remains simple: to provide high-performing varieties tailored to the needs of agriculture for generations through the delivery of our company principles.

Our company principles

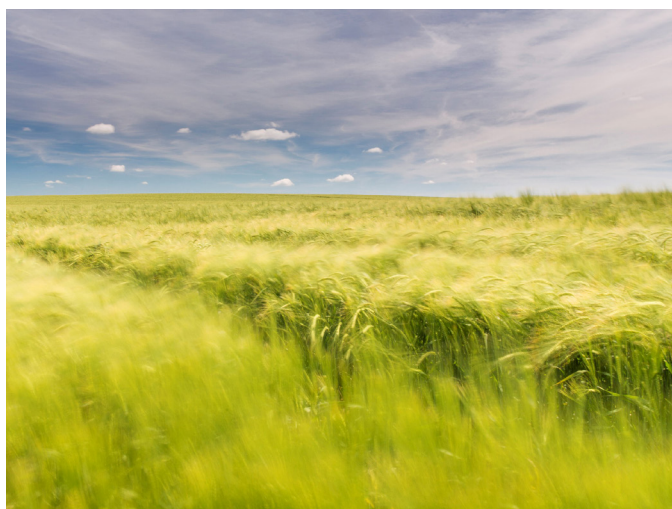
- We increase and improve the genetic potential through outstanding research and breeding programmes.
- We deliver the very best seeds to our farmers.
- They trust us as a powerful partner along the entire value-added chain.
- We create entrepreneurial freedom and help talents to unfold their full potential.

Here at KWS, we understand the importance of malting barley as raw ingredients to the beverage and food industries and as a cornerstone of the farm rotation. Whilst we have a presence in this market sector, we're prepared for growth and believe that we have the expertise to deliver class-leading varieties for growers to supply to the brewing and distilling supply chain.

Our pan-European spring barley breeding program has been refocused to deliver new innovative lines suited to the malting, brewing and distilling industries across the key markets of the UK, France, Germany and Scandinavia.

We are increasing our genetic pool of spring malting types and aim to work with everyone across the supply chain to realise that potential. Not only that, we have a wealth of other species suited to malting, be it winter types, distilling wheats and hybrid ryes to suit your farm and end-user customer.

To learn more about our dedicated breeding programmes for the malting and brewing sectors, contact us at our breeding station in Cambridgeshire.



KWS Contacts

Henry Barber

Spring Barley Breeder

T 07717 828502

E henry.barber@kws.com

Kirsty Richards

Cereals Product Manager

T 07748 960726

E kirsty.richards@kws.com